

M. E. S. PONNANI COLLEGE

Ponnani South P.O, Malappuram Dist., KERALA-679 586, Phone: +91 4942666077

Website: mesponnanicollege.com E-mail: principal.mesponnani.org

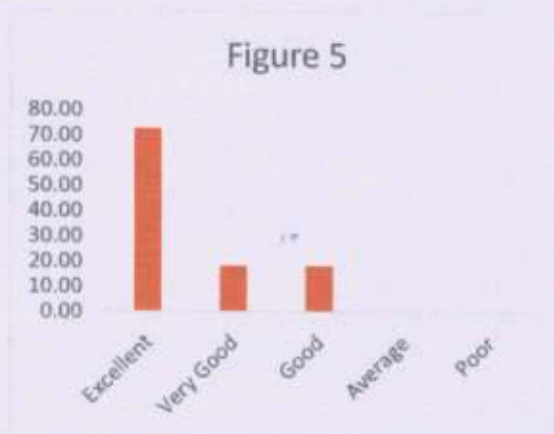
EMPLOYER FEEDBACK ON CURRICULUM-2017-2018

Sl. No	Queries	Percentage Response				
		Excellent	Very Good	Good	Average	Poor
1	How do you rate relevance of the courses in relation to the program?	63.64	36.36	9.09	0.00	0.00
2	How do you rate the sufficiency of the courses related to industry that are included in the program?	54.55	45.45	0.00	0.00	0.00
3	How do you rate the competencies/ outcomes in relation to the course content?	54.55	27.27	18.18	9.09	0.00
4	How do you rate the relevance of the topics to the Industry?	63.64	36.36	9.09	0.00	0.00
5	Rate the offering of the in relation to the specialization streams?	72.73	18.18	18.18	0.00	0.00
6	How do you rate the offering of the electives in relation to the Technological advancements?	45.45	45.45	9.09	9.09	0.00
7	How do you rate the applicability of the domains and the tools used for designing the experiments in terms of existing practices in the Industry?	36.36	45.45	9.09	18.18	0.00
8	How do you rate the experiments in terms of their relevance to the real life application?	45.45	36.36	18.18	9.09	0.00
9	How do you rate the proficiency of our students working with you?	63.64	36.36	9.09	0.00	0.00

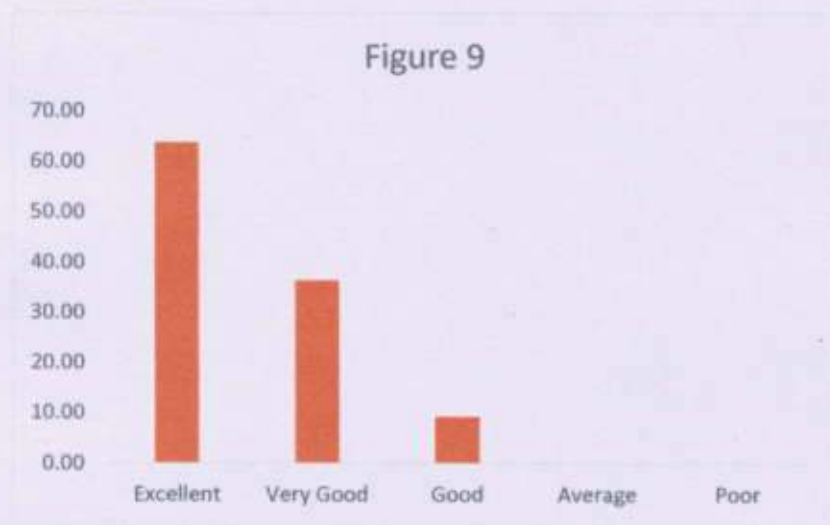
The first question was about the rate relevance of the courses in relation to the program. The feedback given should be the choice like excellent, very good, good, average and poor in all the questions in the curriculum. Sixty three percent commented excellent and 36% graded very good (Fig. 1). The second question was about the sufficiency of the courses related to industry that are included in the program. Fifty four percent employees agreed with this with excellent rating (Fig. 2). Third and 4th question was about the competencies/ outcomes in relation to the course content and relevance of the topics to the industry. More than 50% employee marked excellent for both the questions (Fig. 3 and Fig. 4).



The next 4 questions in the employee feedback form were related to the curriculum and the impact in industry and the relevance of experiments in the curriculum with real life. Seventy two percentage of the employee responded excellence and 18% responded very good (Fig. 5). Forty five percent responded excellent and very good for elective papers in curriculum in relation to the technological advancement (Fig. 6).



More than 35% responded excellent for the experiments included in the curriculum which helped for their industrial and real life applications (Fig. 7 and Fig. 8). Sixty three percentage employees rated excellent with the students working with them (Fig 9).



Principal
 MES Ponnani College
 Ponnani South - 679 586